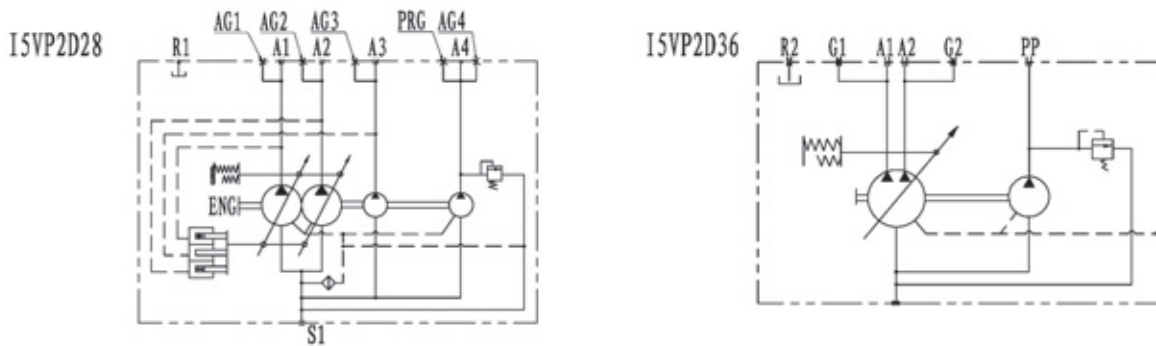


Summary

The I5VP2D28/36 series product is designed for main pump of mini size excavator and mini size mobile machine. It features compact structure, long lifetime, and high efficiency. The pilot gear pump directly is intergrated to main pump by spline adapter, so the series can provide various pilot pump installation type.

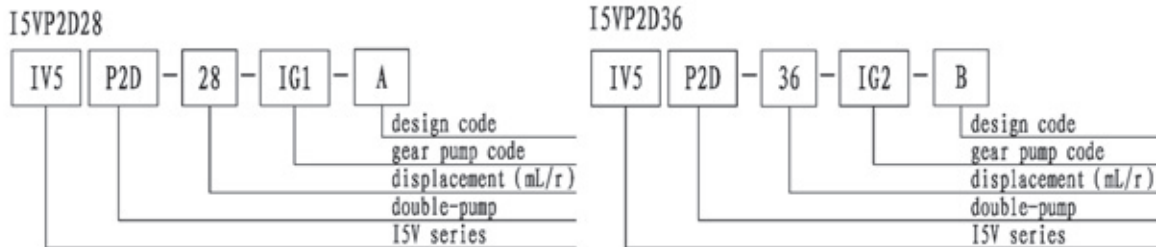
Hydraulic diagram



Features

This is a variable displacement double-piston pump discharging with two equal displacements from one cylinder block. This pump is so compact as to be appeared a single pump though this is actually a double pump.

Model options

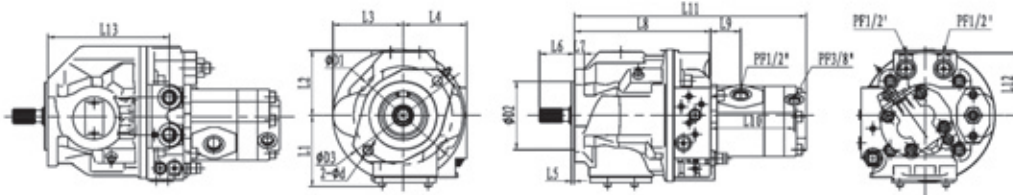


Specification

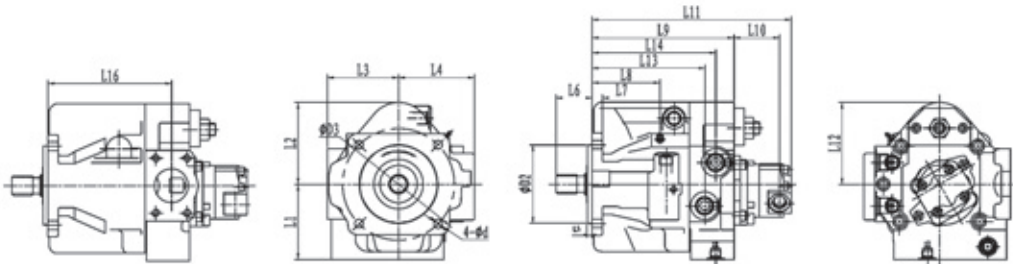
Model	Max. displacement	Pressure (MPa)		Speed r/min	Max. input torque N·m	Hydraulic fluid		Weight kg
	mL/r	Rated	Max.			Oil temperature range	Oil viscosity range	
I5VP2D28	27.5 × 2	22	25	2600	140	-20 ~ 95°C	10 ~ 1000 cSt	33
I5VP2D36	36 × 2	28	30	2100	167	-20 ~ 95°C	10 ~ 1000 cSt	47

Dimensions

ISVP2D28



ISVP2D36



Dimensions

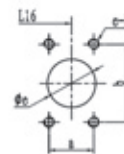
Model	D1	D2	D3	d	L1	L2	L3	L4	L5	L6	L7	L8	L9	L10	L11	L12	L13	L14
ISVP2D28	146	101.6	175	14	106	97	104	95	5	44	14.5	95	203	45	346	93.5	181.5	
ISVP2D36		127	181	14	122.5	133	115.5	123	8	58.8	16.5	110	230.2	73.5	322.7	133	182.2	200.2

Dimensions of shaft end

Model	No. of teeth	Pressure angle	Module	Major diameter	Minor diameter	Rule
ISVP2D28	13	30°	16/32	φ 21.8	φ 18.63	SAE
ISVP2D36	14	35°	12/24	φ 31.2	φ 26.99	SAE

Flange mounting face for suction port

Model	a	b	e	e-H	L16
ISVP2D28	37.5	69.9	40	M12-18	177.5
ISVP2D36	50.8	88.9	55	M12-15	200.2



Flange mounting face for delivery port

Port size	g	h	L18	L19	L20	O-ring
PF3/4	45	29.8	2.5	20	3.5	P24
PF3/8	28	18.6	2.0	15	2.5	P14
PF1/2	34	22.6	2.5	19	2.5	P18
PF1/4	24	15.6	1.5	15	2.5	P11

